

# GENIUS TOOLS Model Processor Worker Extension

12.0.3.0

## Installation

© 2026 INNEO Solutions GmbH



## Contents

<b>1</b>	<b>Installation</b>	<b>2</b>
1.1	Initial installation .....	2
1.2	Update .....	3
1.3	Mehrfachinstallationen .....	4
<b>2</b>	<b>Configuration</b>	<b>5</b>
2.1	MPU configuration file .....	6
2.2	Configuration Options .....	7

# 1 Installation

GENIUS TOOLS Model Processor Worker Extension is the PDM component for executing task lists in the Windchill visualization process. With this license, you have access to the action lists created using GENIUS TOOLS Model Processor Rework or Report.

Model Processor Worker Extension is installed with the Model Processor User setup and is configured in the Config.pro file for the integration with Windchill.

GENIUS TOOLS Model Processor User can be used to rework files automatically at the occurrence of defined events. To use this trigger functionality inside of PTC Creo View Adapter, a free Model Processor Worker Extension license is needed.

We recommend to install the license server on the same machine as the PTC Creo View Adapter. If multiple machines are used for generating Creo Viewables, we recommend that you have a license for each of these computers or configure the appropriate queue settings on the WT server.

## 1.1 Initial installation

### Prerequisites

GENIUS TOOLS License Manager must be accessible either locally or on the network.

The license for Model Processor User must be available.

Creo Parametric must be closed before installation.

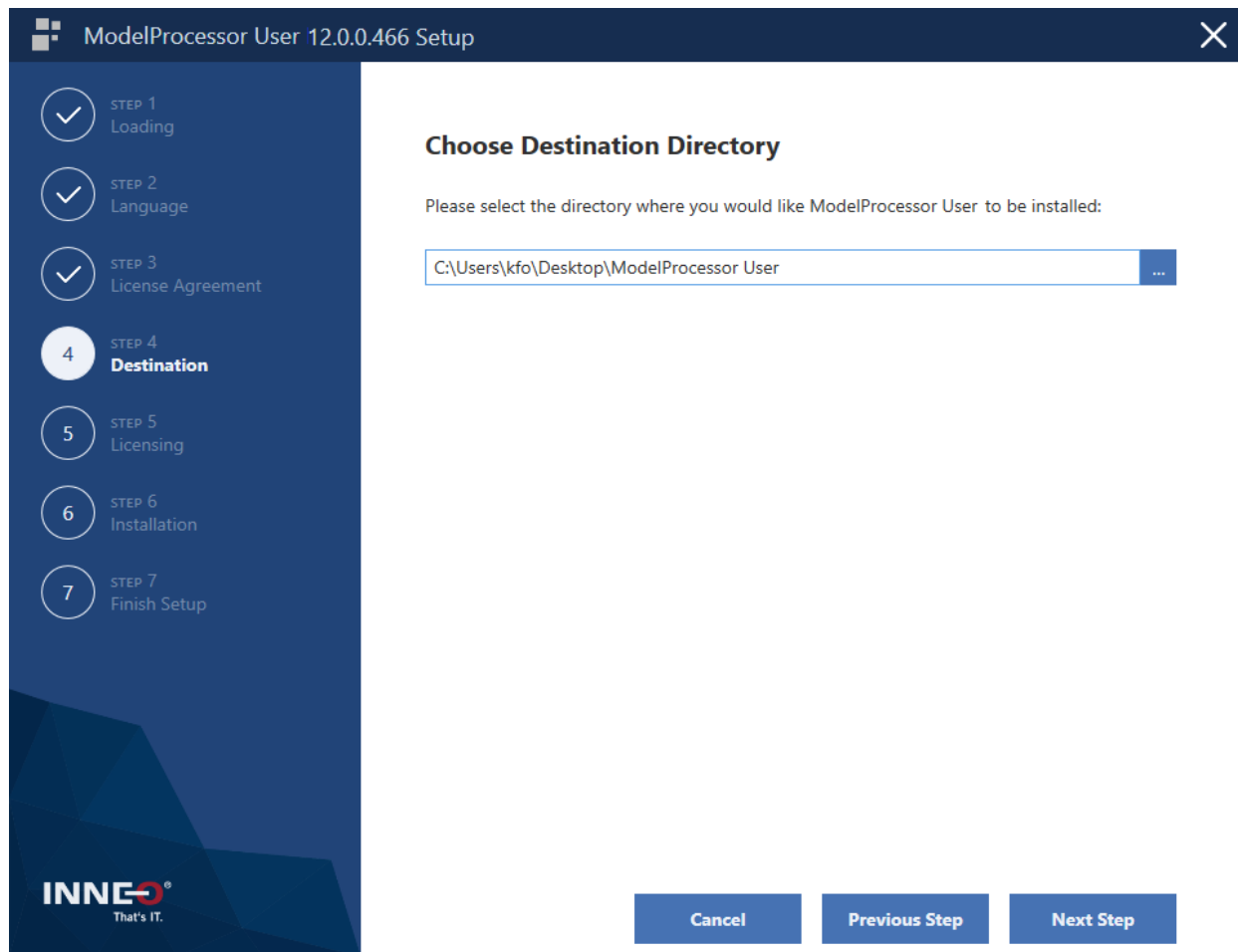
### Procedure:

1. Download the GENIUS TOOLS Model Processor software package. A ZIP file containing the software will be saved on your computer. The ZIP file contains the installation file *setup\_GT-ModelProcessorUser\_<Version>.exe*.
2. Start the installation file,
3. Select the language.
4. Read and accept the license agreement.
5. Specify the target directory for installation.  
GENIUS TOOLS Model Processor User must be run in a specified directory on the computer that contains the PTC Creo View Adapter installation

---

**Please note:** Users require read access for the installation directory.

---



5. Install GENIUS TOOLS Model Processor

6. Complete installation

---

**Please note:** If you move the installation directory to another location, run the file *rewriteCreoTK.cmd*. This will automatically correct the folder paths in the relevant configuration files.

---

## 1.2 Update

If you have already installed GENIUS TOOLS Model Processor User and would like to update the existing installation, follow the steps for initial installation.

During an update, the configuration file *mpu\_main.cfg* in the folder *<installation directory>\conf* is not updated so that no company-specific configuration settings are overwritten. When updating, you can find the current configuration options in the file *mpu\_main\_default.cfg* or in the list in the chapter [Configuration Options](#) <sup>7</sup>.

## 1.3 Mehrfachinstallationen

It is possible to install two GENIUS TOOLS Model Processor Users. The first option is to rename one Model Processor User, for example to MPUserBeta or MPUser<version number>. The second option is to install the Model Processor User in a different folder.

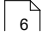
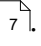
## 2 Configuration

The configuration of Model Processor Worker Extension requires the following steps.

### Create directory for task lists

1. Create a directory where you will store the MPX files which contain the action lists, e.g., `<installation_directory>/MPXs`.

### Set configuration options

2. In the conf directory, open the [MPU configuration file](#)  `mpu_main.cfg`.
3. Enter the path to the MPX directory and the license server in the corresponding configuration options; see [List of Configuration Options](#) .
4. Please also check:  
`mpu_auto_unset_already_reworked_models=0`  
`mpu_temp_path=<PATH_TO_TEMP>` (read and write access for users)
5. Additional to the normal configuration the after\_open trigger need to be configured. This could be like:

```
mpu_start_mpx_after_open=trigger run_trigger
mpu_start_mpx_after_open_write_check_rework_history=00
mpu_start_mpx_after_open_conf=11101
mpu_start_mpx_after_open_showUI=0
```

6. The following options should be set in addition:

```
mpu_no_pro_notifications=1
mpu_show_no_pdm_server_informations=1
mpu_cancel_if_not_checked_out=0
mpu_pdm_mdI_change_dialog=0
```

### Set export directory in the MPX file

7. When creating the MPX file, the variable `@workdir:<PATH_TO_DIR>@` has to be used for exporting files. The path to the PTC Creo View Adapter transfer directory or pubtemp directory can be used. The path is defined by the PTC Creo View Adapter configuration.  
More information about the usage of variables can be found inside the Model Processor documentation.

## Configuring PTC Creo View Adapter

8. The entry for Model Processor has to be inserted inside the config.pro file of Creo View Adapters (std. proe\_setup) for Creo visualizations.

! MPUser

protkdat <Installationsverzeichnis>\mpuser\creotk\_creo12

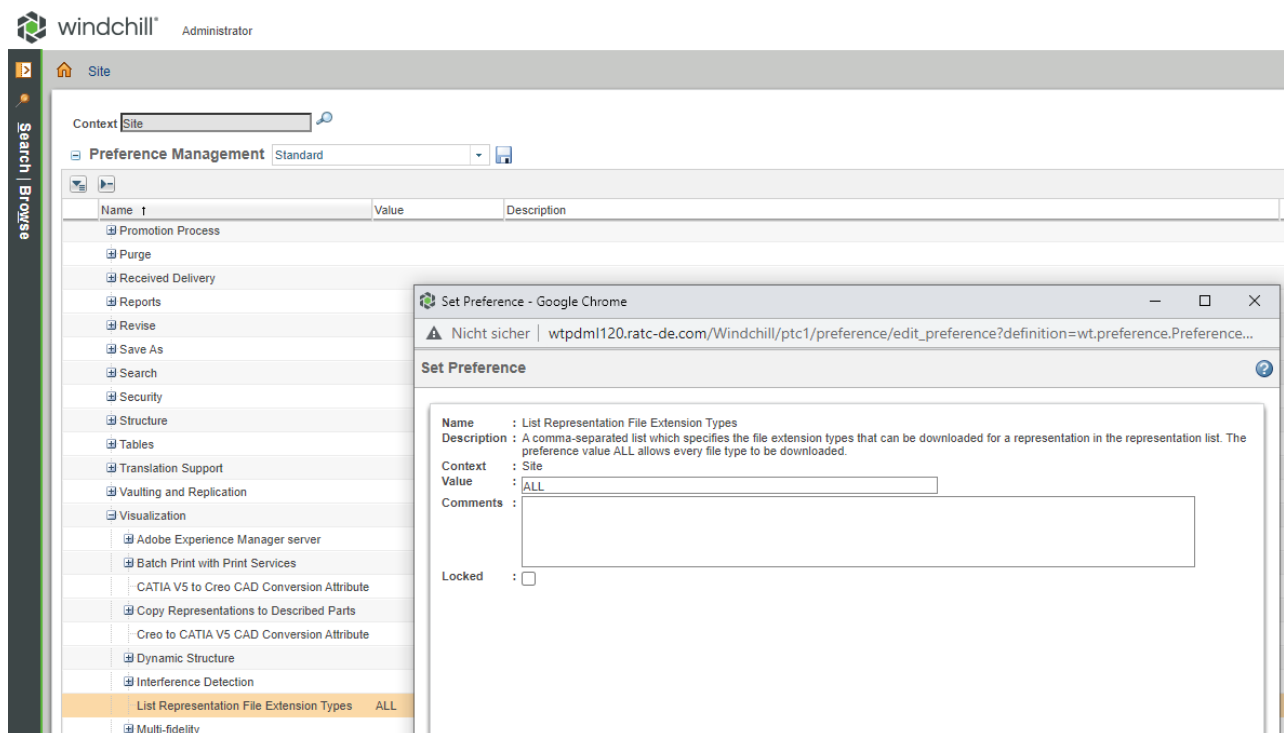
## Configuring PTC Windchill

9. The file extension which should be transferred to Windchill has to be propagated by the wvs.properties file, e.g.

cadagent.pvfiletypes=OL ED PVS PVP PVM PLT DXF HPGL PGL TXT AST CCZ CC GIF JPG PDF PVT GRP EMK ETB PVA CGM TGA DWF EXTENTS DWG PVO EDA PVC PNG PVD PVOA STP IGS TIFF GLB

10. The display in Windchill must be activated.

SITE -> Preference management -> Visualization -> List representation file extension types:



## 2.1 MPU configuration file

The file containing the configuration settings for Model Processor User is called *mpu\_main.cfg*. The file

- contains all configuration settings in German and English with a description,
- must be saved with ANSI character encoding,

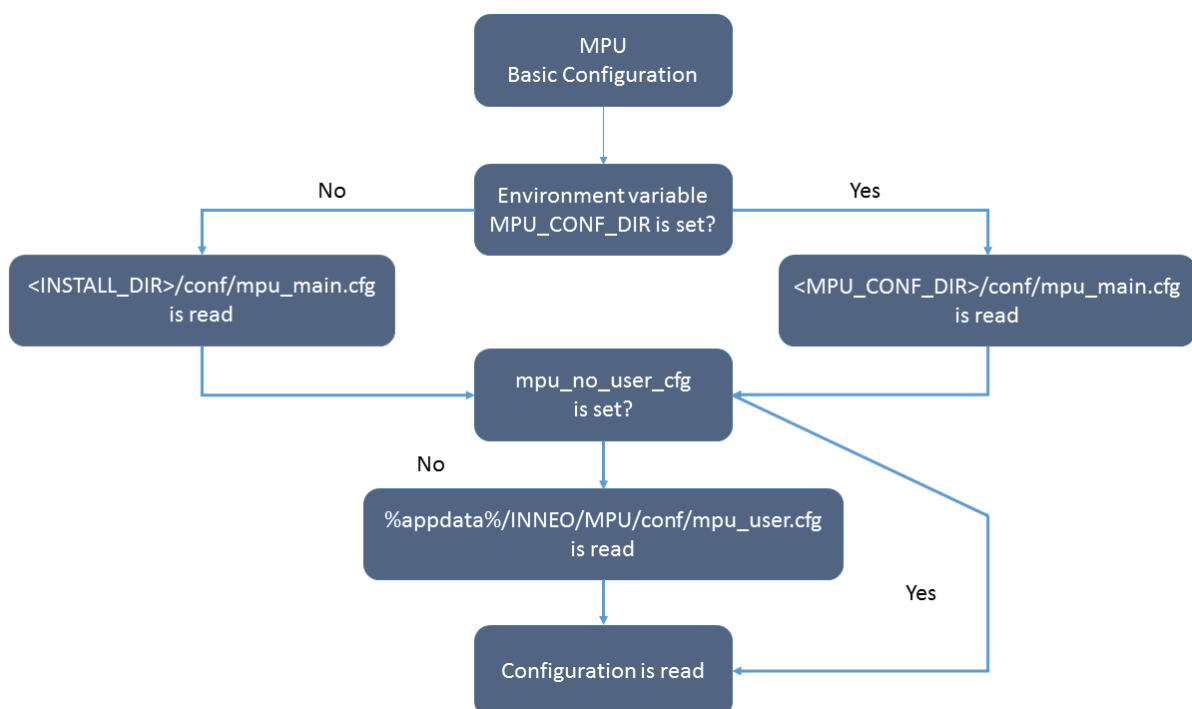
- is located in the conf directory of the MPU installation. It can also be stored in another file folder. To do this, this folder must be specified via the `MPU_CONF_DIR` environment variable.

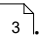
**Please note:** Make sure that no extra spaces are used in the lines and that there is a blank line at the end of the file.

You can also modify configuration options on a user-specific basis. To do this, create an *mpu\_user.cfg* file in the user directory at

`%appdata%/INNEO/MPU/conf`

You must create the MPU directory and the conf subdirectory yourself. The same rules apply as in the *mpu\_main.cfg* file.



When updating the Model Processor installation, you can find the new configuration settings in the *mpu\_main\_default.cfg* file. The *mpu\_main.cfg* file remains unchanged, see [Update](#) .

## 2.2 Configuration Options

There are four configuration options in the MPU configuration file that, if incorrect, can cause the system to malfunction. Other configuration settings are optional.

To ensure that log files and runtime behavior can be reviewed later, the temporary directory should be located in a directory that is accessible and readable by regular users. For testing purposes, the deletion of log files can be disabled in the configuration.



<b>Necessary configuration options with default value</b>	<b>Explanation</b>
mpu_mpx_path=C:\temp\MPXs\	Path to MPX directory, where the MPX files are located. - read-only access
mpu_lic_path=7766@localhost	Address of the license server - read-only access
mpu_temp_path=%TEMP%	A temporary path that is as flat as possible, used to write the log files. - read and write access
mpu_ext_filter_file=mp_check.xml	If an automatically selected filter exists, this can be entered here.
<b>Further configuration options with default value</b>	<b>Explanation</b>
mpu_auto_unset_already_reworked_models=0	Specifies whether a preselection (1) of the displayed data should also be performed after the external data, or not (0).
mpu_cancel_if_not_checked_out=0	Only revise models that have been checked out in Windchill.
mpu_check_modifyable=0	Checks whether MPU has write access to the models.
mpu_check_parameter_value=1	Defines a corresponding value that should be within the defined parameter for mpu_check_parameter.
mpu_check_parameter	Defines a parameter to be checked.

<b>Necessary configuration options with default value</b>	<b>Explanation</b>
mpu_column_parameter_width=10	Specification the width in the selection window.
mpu_column_parameter=BENENNUNG	Specification of the designation in the selection window
mpu_disable_generating_text_folder=0	This configuration defines whether the text folder is written to the temporary system path (0) or not (1). If the value is set to 1, the protk.dat file must be set to the installed DLL folder or a suitable text folder.
mpu_filter_asm=1	Specifies whether the Model Processor User is started (1) or not (0) when opening an assembly.
mpu_filter_curmod=1	Specifies whether the Model Processor User is started (1) or not (0) when opening the current model.
mpu_filter_drw=1	Specifies whether the Model Processor User is started (1) or not (0) when opening drawing.
mpu_filter_inst=1	Specifies whether the Model Processor User is started (1) or not (0) when opening Instance.
mpu_filter_prt=1	Specifies whether the Model Processor User is started (1) or not (0) when opening part.
mpu_lang=de	Specifies whether the language setting of the log (not in the user interface) is displayed in German (de) or English (en).
mpu_log_as_tree=1	Specifies whether the log output is displayed as a tree (1) or as a list (0).
mpu_log_show_filter_warning_on_parent_node=0	Specifies whether the warning symbols are inherited (1) or not (0) for filter warnings.

Necessary configuration options with default value	Explanation
mpu_no_debug_in_creo_log=0	No log is output directly in Creo Parametric, but rather in the MPU log file.
mpu_no_pro_notifications=1	MPU reacts (0) to the Creo model changes or it is deactivated (1).
mpu_pdm_mdl_change_dialog=0	Suppresses (0) the Windchill dialog that pops up when modifying read-only models.
mpu_show_log=0	The log area is folded down and is not filled (0) or is unfolded and is filled (1).
mpu_show_no_debug_in_log=0	Specifies whether a complete output of all messages defined in mpu_no_debug_in_creo_log is written to the Creo log file (1) or not (0).
mpu_show_no_pdm_server_informations=1	Does not display the model information from the PDM server in the model list.
mpu_start_mpx_	Automatically revises the selected data when saving with the selected MPX and task list (without file extensions).
mpu_start_trigger_without_mpu=1	Specifies whether the use of the MPU license is disabled (1) or not (0).
mpu_use_global_filter=0	Specifies whether the global filter of the task list is always evaluated (1), not evaluated (0), or not evaluated when it is activated (-1) in the list.
mpu_write_history_in_models=0	Write a parameter to all revised models that indicates whether the model has been edited.
mpu_write_id=1	Writes the application ID of the loaded DLL to the specified file.

Necessary configuration options with default value	Explanation
mpu_write_reports_in_time=1	Reports are written to the file (1) each time the model is changed or when the MPU run is terminated (0).
mpu_write_welcome_message=1	Specifies whether the welcome message should be displayed (1) or not (0) when the MPU is started.
mpx_button_filter=^mpuser_example_.*\mpx\$	This configuration defines a filter for MPX files that are displayed as buttons in the Creo ribbon. The filter must be a regular expression.